

IRONING PRESSING MACHINERIES – FUSING PRESSES



Operating Manual OCTOPUS



ATTENTION !!!

Please read this instruction manual very carefully before you start using your new Octopus Finishing Table.

The customer by purchasing this product declares that he is fully aware, and accepts everything mentioned in this operating manual.

Primula SA assumes no responsibility for any errors herein, nor for incidental or resulting damage in connection with the performance or use of this operating manual.

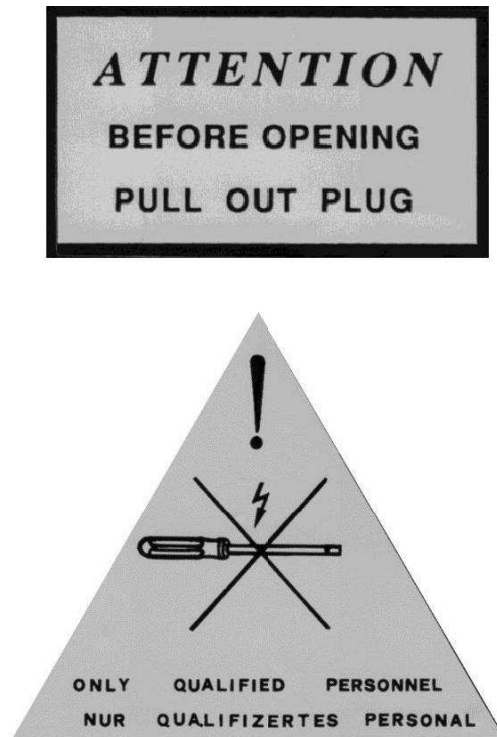
You may not copy, reproduce, or translate this operating manual, or parts of it, to another language without prior written consent of Primula SA.

Any information in this manual may be subject to change without any prior notice.

For the safe usage of your Ironing Table, please read the following operating instructions carefully, as listed below:

1. Install, use and maintain the Ironing Table according to the instructions in this manual. If not followed, the manufacturer has no responsibility for the possible failed operation or safety.
2. Before connecting the power supply, control that the voltage corresponds to the voltage indicated on the technical specifications label that is placed in the back of the Ironing Table.
3. Connect the machine only to a power supply that meets the minimum required frequency and is properly grounded. The ironing Table is not to be left unsupervised while connected to the power supply.
4. Use the Ironing Table ONLY for the intended purpose in accordance with this instruction manual and only with the accessories that are provided or that are intended for this specific Ironing Table. The manufacturer is not liable for any damages resulting from misuse or wrong use of the Ironing Table.
5. DO NOT touch the power supply with wet hands.
6. Do not clean the Ironing Table with corrosive or other damaging materials/chemicals.
7. For any malfunction or further information requests, please contact your dealer or the manufacturer.
8. Any kind of welding or alterations on the Ironing Table or its parts is strictly prohibited.
9. Never use the Ironing Table to support any other machine or structure.
10. It is strictly forbidden to remove any protective device/guards.
11. It is strictly prohibited to intervene in the control units/circuit boards of the Ironing Table.

Each ironing board has the following attention marking



The operator of the Octopus has the obligation to inform himself regarding the dangers which may occur during usage, so that he/she can avoid them or minimize their occurrence as best as he/she is able to.

BASIC PRINCIPLES OF INSTALLATION AND TRANSPORT

Put the Ironing Table in the designated area of your choice and align the machine by increasing/decreasing the height of its feet Nr.14. Make sure that the ironing Table is stable and the ironing surface flat.

The correct assembly and adjustment of the ironing table is vital to the safety of the user and the ironing tables life span. For this reason, the installation, alteration, replacement or extension of the ironing table should only be performed by qualified personnel.

Under no circumstances is the intervention to the ironing table allowed, unless it's for the planned maintenance by an unauthorized engineer.

If, after reading the instructions, you remain uncertain regarding the correct assembly of the ironing table, contact the manufacturer or an authorized representative before proceeding with its use.

CONNECTION TO POWER SUPPLY

For everything regarding the electrical connection and power supply, follow the instructions of the electrical diagram which is to be found inside this operating manual. Notice carefully all the stickers that carry warning signs on the product itself.

In case you have a single-phase device of 230V, plug the device in, by using an adapter onto a SCHUKO socket (230V/16A). The connection must be established using a tripolar cable 3X1.5mm (1 phase (brown), 1 neutral (blue), 1 grounding (yellow-green)). The current must be secured with 16A.

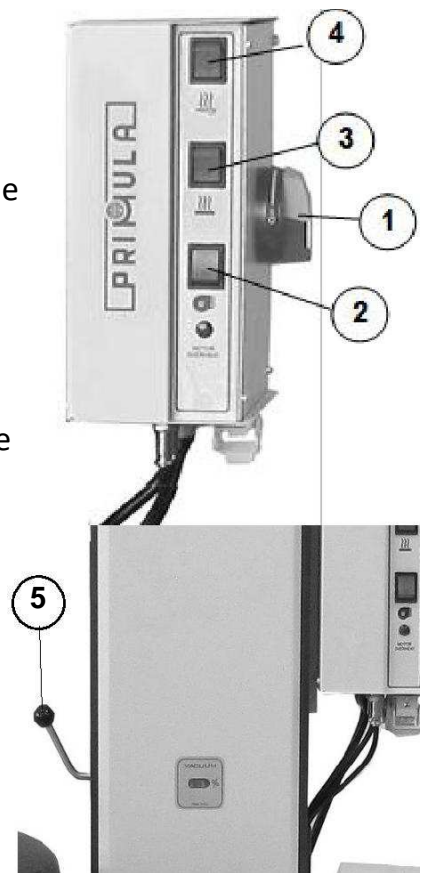
If the device is 400V/3-phased, the connection must be established using a 5-polar cable 5X1.5mm (3 phases (brown, black, grey), 1 neutral (blue), 1 grounding (yellow-green)). The current must be secured with a tripolar circuit breaker (3X10A).

For any device that is connected to a 3-phased current, make sure that the rotation of the motor is done clockwise.

WARNING! The manufacturer is not liable for any injury that might occur due to faulty electrical circuits or due to faulty connections made by unqualified personnel.

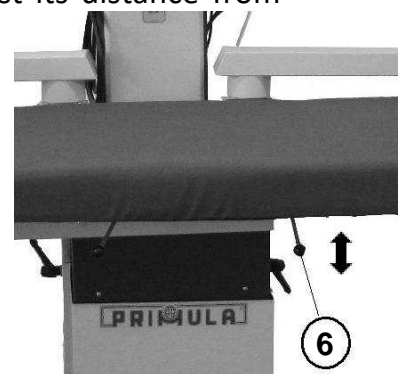
OPERATING INSTRUCTIONS

- Turn on the general switch Nr.1
- Turn on the switch Nr.2 to activate the suction.
- Turn on the switch Nr.3 to activate the heating on the ironing surface.
- Adjust the heating control of the ironing surface to 110°C during the winter months and to 90°C during the summer months.
- Turn on the switch Nr.4 to activate the heating of the ironing bucks.
- Whenever you want to activate the suction, step slightly on the foot pedal.
- Adjust the intensity of the suction through the lever Nr.5, which is located on the chimney.
From 0% - 100% depending on the fabric (weight, quality etc.).
- Adjust the amount of steam from the steam generator in proportion to the intensity of the suction to avoid the liquidification of the steam on the ironing surface. Thinner fabric requires smaller amounts of steam, while thicker fabric requires larger amounts.
- In case the ironing table is equipped with a Vario suspension system (not required) hang the iron from the balancer and adjust its distance from the ironing surface (around 5cm). After the ironing is over, unhang the iron and place it on its original base.



In case your device is equipped with Blowing

- Adjust the pressure of the blowing based on the fabric at hand (weight, quality etc.) from the lever Nr.6 located beneath the ironing surface.
- To use the blowing step slightly on the foot pedal.





Suction and Blowing air transfer to and from the bucks

A) The two bucks that are situated on the back of the Ironing Table

If you want to transfer the suction/blowing air from the ironing surface to the bucks, then pull the buck over the ironing surface and automatically the air will switch from the ironing surface to the bucks and vice versa.

B) The three bucks that are situated on the buck holder in-front of the ironing table.

If you want to transfer the suction/blowing air from the ironing surface to the bucks, then push the lever Nr. 8 which is located under the board surface, and the air will switch from the ironing surface to the buck holder and vice versa.

For each individual buck that you want to use, you must align the arrows of the buck with the arrow of the buck holder so that the suction/blowing can flow into your chosen buck.

SPECIFICATIONS

The ironing table, which you have purchased, has been built to meet international and European standards of safety from a company with experience in the ironing sector since 1969.

Regarding its characteristics, the ironing table includes a serial number plate (see below) where all its specifications are displayed. Every warning and symbol that is located on the ironing table itself is in accordance with the guideline 92/58/EC of the European Union.

The serial number plate has been put on an easily viewable spot on the ironing table and it is made from fadeless material.

Amongst others, the Serial Number plate displays the following:

- Construction Type
- Rated Voltage of Use
- Rated Frequency of Use
- Accumulated Installed Wattage
- Date of Build
- Company Logo
- Serial Number
- Manufacturer Information

CLEANING – MAINTENANCE – PERIODIC CHECKS OF DEVICE

Before cleaning/checking/maintaining the ironing table, ensure that it is not connected to any power supply source and that it is not hot after usage.

The processes of cleaning and maintenance must take place frequently and is vital to the correct, safe and long-term function of the ironing table.

For the ironing table to function correctly over time you need to:

- Keep the covers of the board and those of the bucks clean, in order to have a high suction and blowing performance. Wash the blue polyester fabric cover once a month in the washing machine (30-40°C).
- Replace the covers and the foams frequently, in order to have high suction and blowing performance.
- Dust or clean the impeller Nr.3 of any fuzz at least 2-3 times a year.
- Periodically clean and lubricate the ball bearing of the swivel arms and the bucks of the ironing table.
- Periodically clean the inner parts of the ironing table, as well as the circuit board, using compressed air.

The manufacturing company suggests:

- Quick daily optical control of the ironing table (locate loose wires etc.) and every 3 month an optical control of each part inside the ironing table.

In case of an error or when in need of repair/maintenance of the whole or part of the ironing table, please contact the manufacturer or an authorized representative. Under no circumstances is it allowed to have the ironing table altered by an unqualified/unauthorized workshop or engineer.

TROUBLESHOOTING

Suction does not function:

- Check if there is sufficient power supply.
- Check if the power supply cable Nr. 33 has for any reason been cut.
- Check the circuit breaker F3 2.5A located inside the circuit board.
- Check if the pedal button is for any reason defective.
- Check the relay Nr. 36.
- Check electric board Nr. 37.

Blowing does not function:

- Check if the pedal button Nr. 15 is for any reason defective.
- Check electric board Nr. 37.
- Check the relay Nr. 36.
- Check the motor Nr. 1.

Ironing surface Heating system cannot be activated:

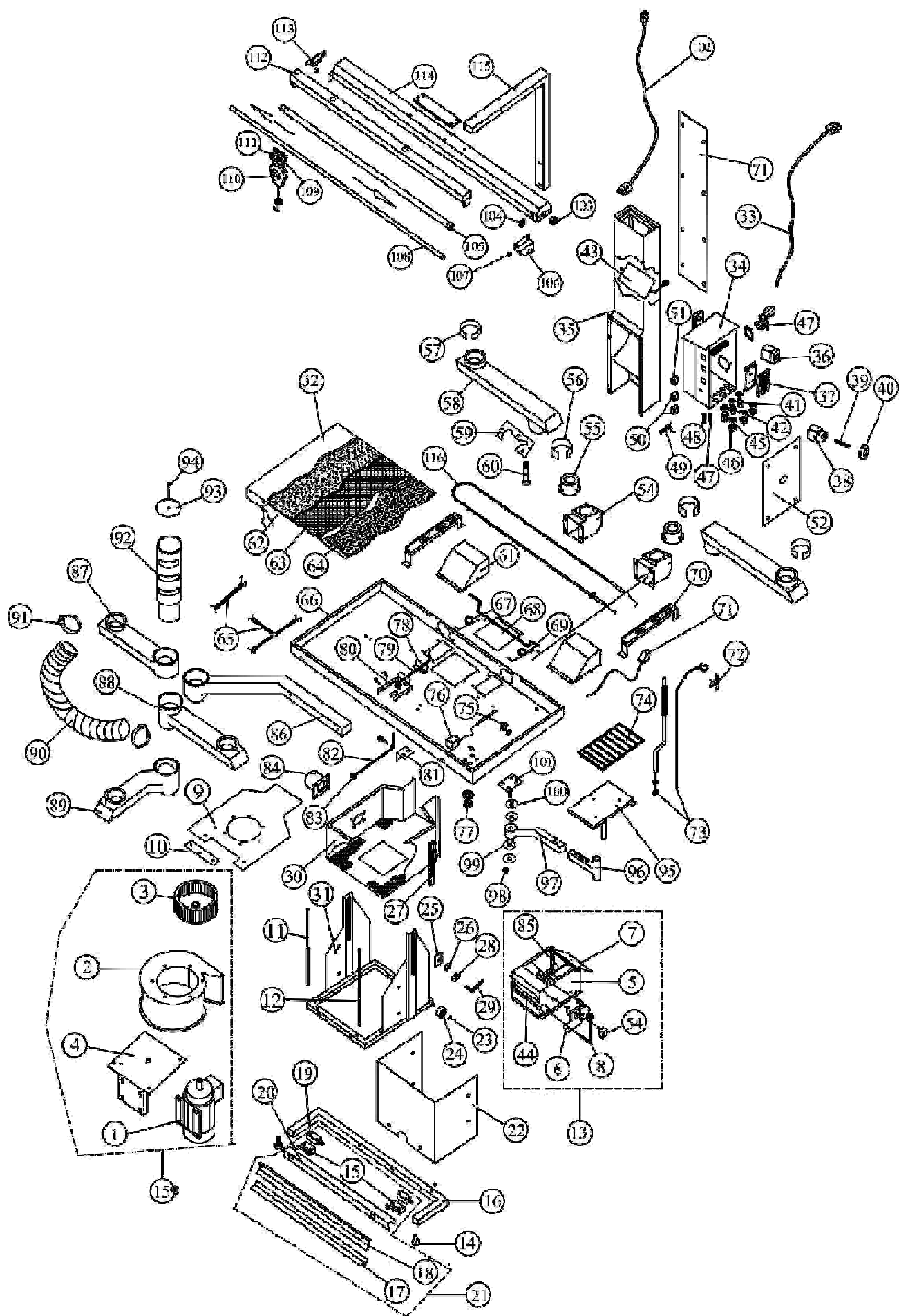
- Check if the safety thermostat Nr. 75 is defective. Replace it.
- Check if the thermostat Nr. 76 is defective. Replace it.
- Check if the electrical impedance Nr. 116 is burned out. Replace it.
- Check if the switch Nr. 50 is faulty. Replace it.
- Check the power supply cable and power plug on the board surface (Nr. 71).

Ironing buck heating system cannot be activated:

- Check the power supply cable and power plug on the buck.
- Check the heating switch Nr. 51 of the buck.
- Check the electrical impedance of the buck.

During use the device produces loud noise:

- Check if the motor bearings have been outworn. Replace them.
- Check the impeller to ensure there is no dust or fuzz that could cause its vibration.

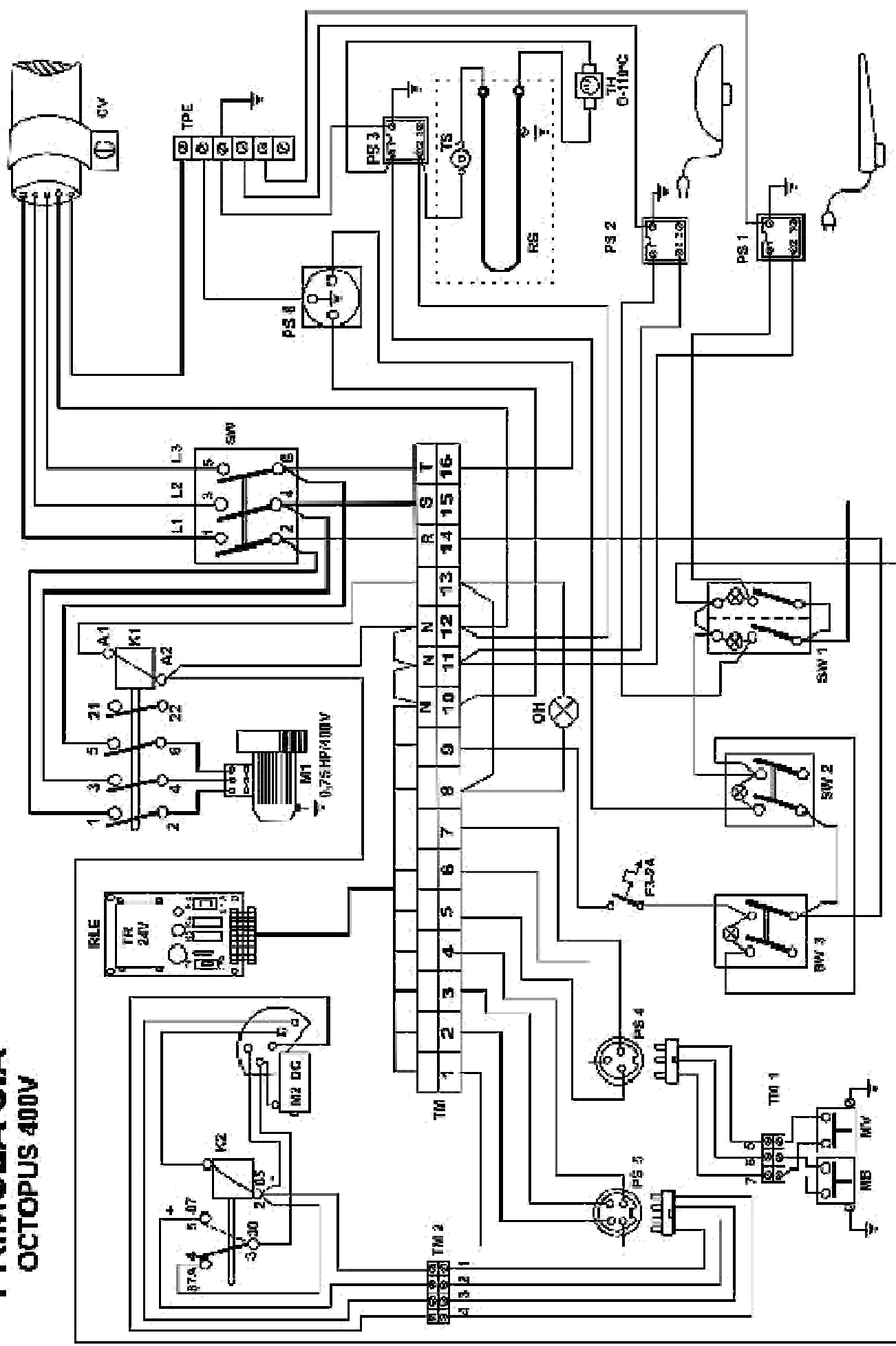


Spare parts list OCTOPUS

<u>No</u>	<u>CODE</u>	<u>DESCRIPTION</u>
1	302-22-001	Electric Motor 0,75HP/400V/50HZ - 3 N
	302-22-001-1	Electric Motor 0,75HP/230V/50HZ - 1 N
	302-22-001-2	Electric Motor 0,75HP/220V/60HZ - 1 N
	302-22-001-3	Electric Motor 0,75HP/110V/60HZ –1 N
2	302-22-002	Metallic shell vacuum
3	302-22-003	Fan wheel Ø180
4	192-22-004	Metallic flange of metallic shell vacuum
5	302-03-005	Case of Vacuum and Blowing interchange system
6	302-03-006	Flap Motor 12V/DC
7	192-03-007	Flap of Vacuum and Blowing interchange
8	192-03-008	Regulating lever of Blowing
9	302-03-009	Vacuum upper cover with flange
10	302-03-010	Metallic cover
11	302-36-011	Suspension lift 36/700N
12	302-36-012	Suspension lift 36/600N
13	102-03-013	Vacuum and Blowing interchange system complete
14	302-02-014	Leg for the regulation of table
15	302-26-026	Vacuum and Blowing micro switch MV45
16	192-03-016	Metallic frame of pedals
17	192-03-017	Vacuum pedal
18	192-03-018	Blowing pedal
19	302-22-078	Cover of micro switch MV45
20	192-04-020	Metallic cover of micro switches
21	192-04-021	System of pedals
22	192-03-022	Metallic cover of base
23	302-03-023	Safety washer
24	302-01-015	Plastic wheel
25	192-03-025	Metallic holder
26	302-03-026	Plastic Washer
27	192-03-027	Metallic Guide
28	302-03-025	Washer
29	302-03-029	Stopper knob
30	192-03-030	Male base
31	192-03-031	Female base
32	302-03-032	Fabric cover PU6513
33	302-22-022	Cable of power supply 3X1.5mm with plug
	302-26-005	Cable of power supply 5X1.5mm
34	192-03-034	Electric box
35	102-00-013	Chimney
36	302-00-010	Relay for motor
37	302-22-018	PC Board
38	302-03-038	Main power switch 3X25
39	302-03-039	Axel of main switch 3X25

No	CODE	DESCRIPTION
40	303-03-031	Cover of main switch 3X25
41	300-00-008	Gland PG 13.5
42	300-00-007	Gland PG 11
43	192-03-043	Regulating flap of vacuum air quantity
44	192-03-044	Regulating flap of blowing air quantity
45	302-03-040	Gland PG 9
46	303-03-021	4-pole safety socket
47	303-03-047	Connector 3pole
48	303-03-048	Connector 4pole
49	302-22-046	Indicator lamp
50	308-00-006	Switch ON-OFF 16A
51	302-00-017	Double switch ON-OFF 16A
52	192-03-052	Electric box-cover
53	302-21-024	Relay 12V/DC
54	192-22-042	Corner of swivelarm
55	192-22-047	Bearing of arm
56	192-22-043	Brass muff of corner 60mm
57	192-22-045	Muff of arm's brass bearing
58	102-22-010-1	Arm of buck
59	192-21-073	Metallic holder of screw
60	302-21-046	Screw of arm
61	192-22-041	Cover of tamper
62	302-22-038	Foam layer 1365
	302-22-038-1	Vacufix layer 1365
	302-22-038-2	Felt molleton 1365
63	302-22-037	Lattice fabric white
64	192-22-036	Metallic gauze
65	302-22-033	Springs with clips
	302-01-035	Springs with clips
66	192-22-030	Tray 1365
67	192-22-075	Spring of Tamper (left)
68	192-22-032	Board's mechanic tamper
69	192-22-076	Spring of Tamper (right)
70	192-22-035	Base of heating element
71	302-04-071	Power supply cable of heating element
72	192-01-027	Hanger of the iron's cables
73	107-01-000	Antenna
74	107-03-000	Silicon iron rest mat
75	302-01-010	Safety thermostat 145°C
76	302-00-012	Thermostat of table 110C
77	302-26-004	Thermostat knob
78	192-36-078	Metallic holder of axle mechanic tamper
79	192-36-079	Axle of mechanic tamper
80	192-36-080	Metallic holder of lever and axle
81	192-36-081	Metallic holder of lever

No	CODE	DESCRIPTION
82	192-36-082	Lever of Board's mechanic tamper
83	302-00-040	knob of air quantity adjuster lever
84	192-36-084	Bearing for air of suction and Blowing
85	192-03-085	Rod of blowing mechanism
86	192-36-086	Holder of arms
87	192-36-087	Arm of buck No3
88	192-36-088	Arm of buck No2
89	192-36-089	Arm of buck No1
90	302-36-090	Air pipe Ø 85mm
91	302-36-091	Metallic clamp 60-90
92	192-36-092	Bearing male side arms
93	192-36-093	Metallic cover
94	302-36-094	Screw for metallic cover M6X20
95	192-36-095	Metallic base of iron
96	192-36-096	Female arm of iron base
97	192-36-097	Male arm of iron base
98	303-03-015	Nut M10
99	192-36-099	Plastic washer
100	302-36-100	Metallic washer
101	192-36-101	Metallic holder
102	302-22-057	Cable of lighting power
103	302-22-056	Lighting's socket
104	302-22-054	Lighting's switch
105	302-00-044	Fluorescent lighting
106	302-22-055-1	Blade of bar support L
107	302-01-057	Elastic stop
108	192-22-051	Suspension's bar
109	302-22-050	Ball bearing of stretcher's suspension
110	302-00-051	Iron's suspension
111	302-00-049	Stretcher suspension
112	302-22-052	Lighting
113	192-22-055	Blade of bar support S
114	192-22-058	Plate of lighting
115	192-22-059	Corner of vario
116	302-01-014	Heating element 1KW/230V



Spare parts list Wiring Diagram OCTOPUS

Symbol	Description
1C	3-poles main switch
I1	1-pole switch for table heating with indicator lamp
I2	Switch for forms heating with indicator lamp
I3	1-pole vacuum switch
RE	Heat.element PU 2x750W, 230V –PD, 1000W
R1	Vacuum motor relay
R2	Flap motor Relay
M	Vacuum motor 1HP/400V-3ph-50Hz with thermostat
MV	Vacuum pedal switch
MB	Blowing pedal switch
TS	Vacuum motor thermal protector
TS1	Thermostat 30-110°C adjustable
TS2	Safety thermostat (heat stop)
PS1	4-poles safety F-plug (for form connection)
PS2	4-poles safety F-plug (for form connection)
PS3	4-poles safety F-plug (for table connection)
PS4	F-plug for pedal switch connection
PS5	F-plug for flap motor connection
PS6	F-plug for iron connection, Max 1kW
TM	Wires terminal block
CV	Flexible power feeding cable 5 x 1,5mm ²
RLE	DC feeding, electrical card
MDC	Flap motor DC
LS	Indicating lamp for motor over heating